

2453 OLD MTO SPEC

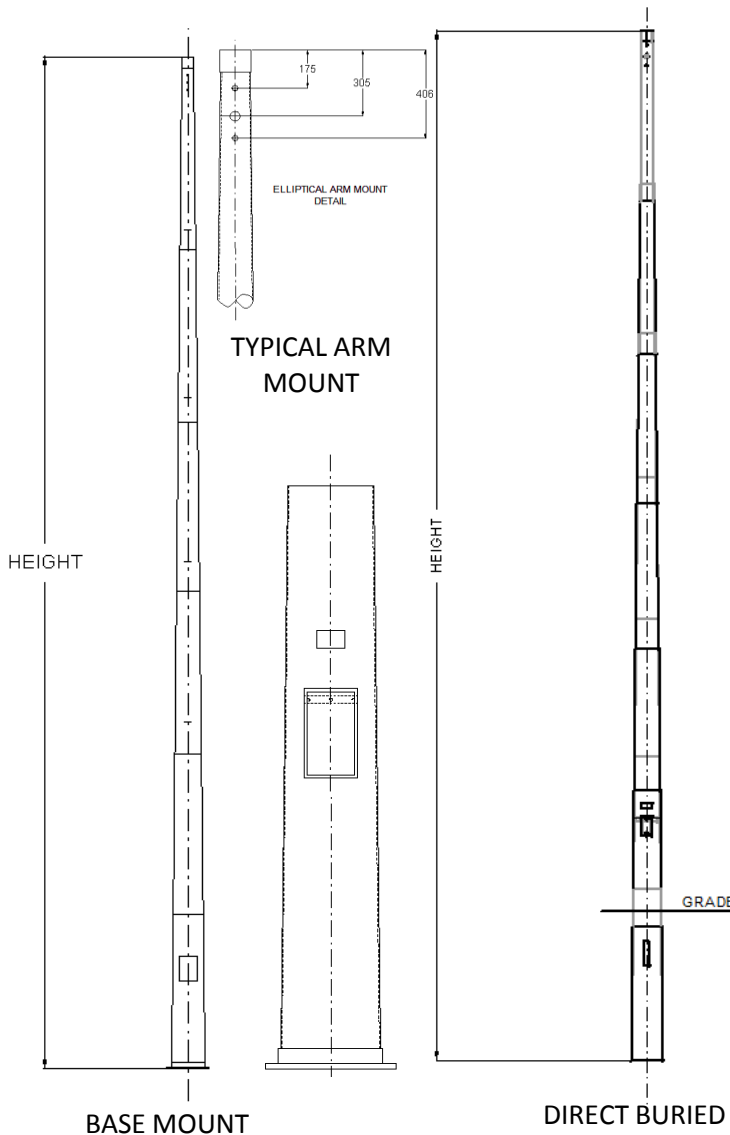
TAPERED ROUND STEEL SECTIONAL STEEL POLES(pre 3/15/12)

FEATURES

TAPERED STEEL ROUND SHAFT
 GALVANIZED FINISH
 ELLIPTICAL ARM MOUNTING STANDARD ON POLES 8.7M+
 PRE SET ANCHORS AVAILABLE
 7"x12" REINFORCED HAND HOLE FRAME STANDARD
 TOP CAP STANDARD

ORDERING INFORMATION

	Description	Cat. No.
2453old	10.5m Sectional Steel Pole Base, 1-6, Street Lighter Rect. 7x12 Hand Hole	C51980
2453old	8.7m Sectional Steel Pole Base, 2-6, Street Lighter Rect. 7x12 Hand Hole	C51981
2453old	7.0m Sectional Steel Pole Base, 3-6, Rect. 7x12 Hand Hole, Base Mtd.	C51982-1
2453old	3.3m Sectional Steel Flasher Pole	B51750
2453old	5.64m Sectional Steel Pole Base Mtd. c\w no.6 base, 1-3, Stub Base Rect. 4x6 Hand Hole (449mm b.c.d.)	A51003-1
2453old	12.0m Sectional Steel Pole Direct Buried, 1-7, Street Lighter Rect. 7x12 Hand Hole, 2 slots	C51983
2453old	10.25m Sectional Steel Pole Direct Buried, 2-7, Street Lighter Rect. 7x12 Hand Hole, 2 slots	C51984
2453old	8.7m Sectional Steel Pole Direct Buried, 2-6, 4x6 Hand Hole, 1 slot	A51742
2453old	7.0m Sectional Steel Pole Direct Buried, 4-6, 4x6 Hand Hole, 1 slot	A51742-2
2453old	5.25m Sectional Steel Pole Direct Buried, 3-6, 4x6 Hand Hole, 1 slot	A51742-1



Sectional steel poles feature:

- Ease of assembly
- Light weight
- Cost effective shipping
- Traffic arm mounting
- Long standing MTO specified item
- DSM listed
- Galvanized finish
- May be coated
- Base Mounted & Direct Buried

AVAILABLE FINISHES	
DB	BRONZE
BL	BLACK
WH	WHITE
GR	GREY
PS	PLATINUM SILVER
GN	GREEN
CU	CUSTOM
GA	GALVANIZED
GLXY	GALAXY - GALVANIZED & POWDERCOATED

OPTIONS:	
POLECOAT STANDARD COATING ANY COLOUR	
ALUMINUM TRAFFIC ARMS AND PODS	
PRE SET ANCHOR BOLTS	
STEEL FABRICATED BASE COVERS	
CUSTOM HEIGHTS AVAILABLE	
CAMERA MOUNTS AVAILABLE	
ALTERNATE FIXTURE MOUNTS AVAILABLE	

PROJECT:	
CUSTOMER:	
JOB#:	
COLOUR:	
QTY:	
NOTES:	

2453 OLD MTO SPEC



155 PONY DRIVE, NEWMARKET, ON, L3Y-7B5
 905-836-2222 WWW.POLEFAB.COM

