

2422 HEAVY DUTY MTO

TAPERED ROUND STEEL SECTIONAL STEEL POLES HEAVY DUTY

FEATURES

TAPERED STEEL ROUND SHAFT	GALVANIZED FINISH
ELLIPTICAL ARM MOUNTING	MTO DSM APPROVED PRODUCT
REINFORCED HAND HOLE FRAME STANDARD	THE ROAD AUTHORITY LISTED
TOP CAP STANDARD	

ORDERING INFORMATION

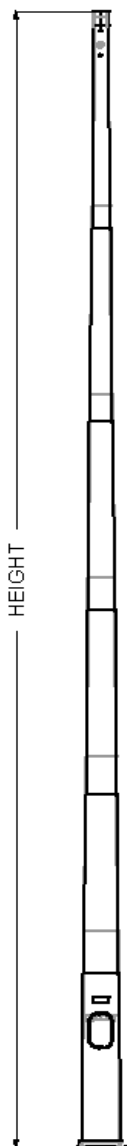
2422	10.5m Heavy Duty Sectional Steel Pole Base,1-6, Street Lighter oval 7x12 Hand Hole, Gussets on Base	C52450-10.5
2422	9.0m Heavy Duty Sectional Steel Pole Base ,Short 2-6, Street Lighter oval 7x12 Hand Hole, Gussets on Base	C52450-9.0
2422	7.5m Heavy Duty Sectional Steel Pole Base ,Short 3-6, Street Lighter oval 7x12 Hand Hole, Gussets on Base	C52450-7.5
2422	6.0m Heavy Duty Sectional Steel Pole Base,Short 4-6, oval 7x12 Hand Hole, Gussets on Base	C52450-6.0

Heavy Class Steel and Sectional Steel Pole Configurations

Pole Height m	Luminaire and Bracket set	Longest Mast Arm with Head m	Maximum Mast Arm Total Length (Note 1) m	Number of Pedestrian Heads (Note 2)	Traffic Signs (Note 3) m ²
10.5	1	7.6	13.1	2	0.75
9.0	1	7.6	13.1	2	0.75
7.5	1	7.6	13.1	2	0.75
6.0	0	7.6	13.1	2	0.75

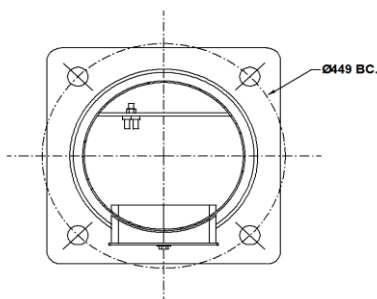
Notes:

1. Mast arm total length applies to the sum of the lengths of two mast arms at 90-degree orientation.
2. Two pedestrian heads at 90-degree orientation include a set of double arm brackets for each.
3. Traffic signs shall be split to give 0.25 m² mounted on the mast arm beside the signal head and 0.5 m² mounted at 2.75 m height above the pole base plate.



- Sectional steel poles feature:
- Ease of assembly
 - Light weight
 - Cost effective shipping
 - Traffic arm mounting
 - Long standing MTO specified item
 - DSM listed
 - Galvanized finish
 - May be coated
 - Base Mounted & Direct Buried
 - Meets CSA S6-06 design criteria

AVAILABLE FINISHES	
DB	BRONZE
BL	BLACK
WH	WHITE
GR	GREY
PS	PLATINUM SILVER
GN	GREEN
CU	CUSTOM
GA	GALVANIZED
GLXY	GALAXY - GALVANIZED & POWDERCOATED



OPTIONS:	
POLECOAT STANDARD COATING ANY COLOUR	
ALUMINUM TRAFFIC ARMS AND PODS	
PRE SET ANCHOR BOLTS	
STEEL DEPENDING ON FINISH SELECTED	
CUSTOM HEIGHTS AVAILABLE	
CAMERA MOUNTS AVAILABLE	
ALTERNATE FIXTURE MOUNTS AVAILABLE	

PROJECT:	
CUSTOMER:	
JOB#:	
COLOUR:	
QTY:	
NOTES:	

2422 HEAVY DUTY MTO



155 PONY DRIVE, NEWMARKET, ON, L3Y-7B5
905-836-2222 WWW.POLEFAB.COM

