

# PF4000,5000 & 6000 SERIES

## STRAIGHT SQUARE STEEL

### FEATURES

STRAIGHT STEEL SQUARE TUBE SHAFT  
 SLOTTED BCD ASSISTS IN FIELD RETROFITS  
 BASE COVER OR NUT COVERS INCLUDED  
 REINFORCED HAND HOLE FRAME STANDARD

POWDERCOAT STANDARD COLOUR FINISH  
 MEETS AASHTO & CSA S6-06 STANDARDS  
 2 DRILLINGS WITH CAP OR TENON STANDARD  
 INCLUDES J-ANCHOR BOLTS

### ORDERING INFORMATION

Example PF 40 20 S AX DB

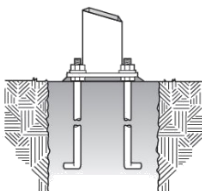
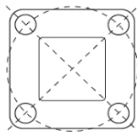
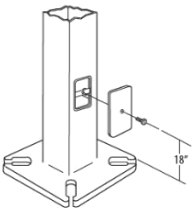
POLEFAB PART# \_\_\_\_\_  
 SERIES \_\_\_\_\_  
 POLE HEIGHT \_\_\_\_\_  
 WALL THICKNESS \_\_\_\_\_  
 FIXTURE MOUNT \_\_\_\_\_  
 FINISH \_\_\_\_\_



## SQUARE TUBE POLES



POLEFAB	SHAFT SIZE	HEIGHT	WALL TYPE	MOUNT TYPE	FINISH	CATALOG NUM.	FT	M	SHAFT	WALL	BCD(A,C)	BPL	A/B'S	PROJ(B)	WT(LBS)	Loadings (PA)				
																400	500	600	700	800
PF	40	15	S	XX	XX	PF-4015-S-XXXX	15	4.7	4	0.125	8.5	19	3/4"X24"	4"	120	0.86	0.86	0.84	0.64	0.49
PF	40	20	S	XX	XX	PF-4020-S-XXXX	20	6.3	4	0.125	8.5	19	3/4"X24"	4"	155	0.47	0.47	0.3	0.16	0.04
PF	40	24	S	XX	XX	PF-4024-S-XXXX	24	7.5	4	0.125	8.5	19	3/4"X24"	4"	183	0.25	0.15	XX	XX	XX
PF	40	20	H	XX	XX	PF-4020-H-XXXX	20	6.3	4	0.188	8.5	25	1"X30"	4"	230	0.8	0.8	0.71	0.5	0.35
PF	40	24	H	XX	XX	PF-4024-H-XXXX	24	7.5	4	0.188	8.5	25	1"X30"	4"	272	0.53	0.53	0.31	0.14	0.01
PF	40	30	H	XX	XX	PF-4030-H-XXXX	30	9.4	4	0.188	8.5	25	1"X30"	4"	335	0.21	XX	XX	XX	XX
PF	50	15	S	XX	XX	PF-5015-S-XXXX	15	4.7	5	0.125	10.5	25	1"X30"	4"	162	1.48	1.48	1.48	1.23	0.99
PF	50	20	S	XX	XX	PF-5020-S-XXXX	20	6.3	5	0.125	10.5	25	1"X30"	4"	205	0.9	0.9	0.76	0.52	0.34
PF	50	24	S	XX	XX	PF-5024-S-XXXX	24	7.5	5	0.125	10.5	25	1"X30"	4"	240	0.57	0.57	0.29	0.09	XX
PF	50	30	S	XX	XX	PF-5030-S-XXXX	30	9.4	5	0.125	10.5	25	1"X30"	4"	292	0.19	XX	XX	XX	XX
PF	50	24	H	XX	XX	PF-5024-H-XXXX	24	7.5	5	0.188	10.5	25	1"X30"	4"	346	1.03	1.03	0.85	0.57	0.36
PF	50	30	H	XX	XX	PF-5030-H-XXXX	30	9.4	5	0.188	10.5	25	1"X30"	4"	424	0.56	0.48	0.17	XX	XX
PF	50	35	H	XX	XX	PF-5035-H-XXXX	35	11.0	5	0.188	10.5	25	1"X30"	4"	489	0.26	XX	XX	XX	XX
PF	60	30	S	XX	XX	PF-6030-S-XXXX	30	9.4	6	0.188	12.5	32	1.25"X48"	5"	528	1.18	1.09	0.64	0.31	0.07
PF	60	35	S	XX	XX	PF-6035-S-XXXX	35	11.0	6	0.188	12.5	32	1.25"X48"	5"	607	0.78	0.41	0.02	XX	XX
PF	60	40	S	XX	XX	PF-6040-S-XXXX	40	12.6	6	0.188	12.5	32	1.25"X48"	5"	685	0.33	XX	XX	XX	XX
PF	60	30	H	XX	XX	PF-6030-H-XXXX	30	9.4	6	0.25	12.5	32	1.25"X48"	5"	683	1.73	1.58	1.3	0.88	0.37
PF	60	35	H	XX	XX	PF-6035-H-XXXX	35	11.0	6	0.25	12.5	32	1.25"X48"	5"	788	1.26	1.08	0.59	0.23	XX
PF	60	40	H	XX	XX	PF-6040-H-XXXX	40	12.6	6	0.25	12.5	32	1.25"X48"	5"	892	0.41	0.41	XX	XX	XX



#### AVAILABLE FIXTURE MOUNTS

- AX DRILL 1 SIDE
- BX DRILL 2 SIZES @90
- CX DRILL 2 SIDES @ 180
- DX DRILL 3 SIDES
- FX DRILL 4 SIDES
- TA 2 3/8" OD TENON
- TB 2 7/8" OD TENON
- TR 3"OD TENON
- CU CUSTOM MOUNT

#### AVAILABLE FINISHES

- DB BRONZE
- BL BLACK
- WH WHITE
- GR GREY
- PS PLATINUM SILVER
- GN GREEN
- CU CUSTOM
- GA GALVANIZED
- GLXY GALAXY - GALVANIZED & POWDERCOATED

#### NOTES:

BCD SHOWN IS +/- 1/2" SLOTS  
 ANCHOR BOLT HOLES ARE BOLT DIA +1/4"  
 BASE COVER MAY BE PLASTIC OR STEEL  
 DEPENDING ON FINISH SELECTED  
 CUSTOM HEIGHTS AVAILABLE  
 CUSTOM COLOURS REQUIRE STEEL BASE COVER  
 ANCHORS ARE GALVANIZED WITH 2 NUTS & 2 WASHERS  
 CONTACT THE FACTORY FOR CUSTOM APPLICATIONS  
 ALL POLES MAY BE SUPPLIED DIRECT BURIED

PROJECT:  
 CUSTOMER:  
 JOB#:  
 COLOUR:  
 QTY:  
 NOTES:

PF4000,5000 & 6000 SERIES



155 PONY DRIVE, NEWMARKET, ON, L3Y-7B5  
 905-836-2222 WWW.POLEFAB.COM

